

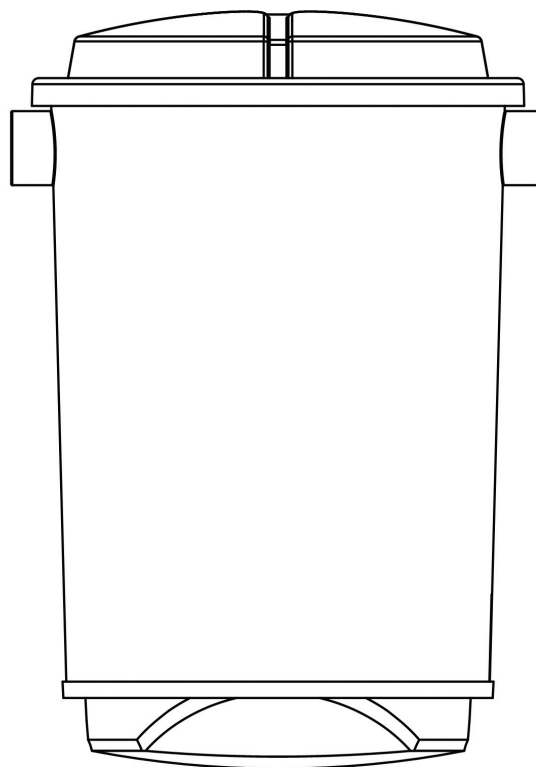
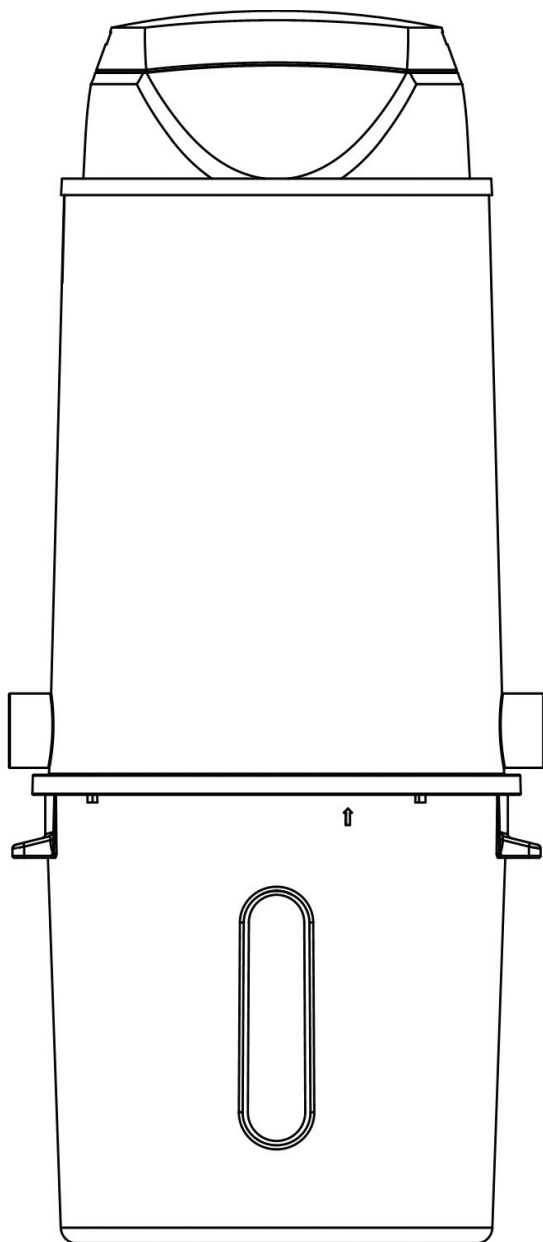
# EUREKA

Invented for the way you clean.™

## Owner's manual

Manuel du propriétaire

Manual del propietario



Model #  
No de modèle #  
N° de modelo

Serial #  
No de sèrie #  
N° de serie

# IMPORTANT SAFEGUARDS

When using an electric appliance, basic precautions should always be followed, including the following:

**READ ALL INSTRUCTIONS BEFORE USING THIS VACUUM CLEANER.**

## WARNING

To reduce the risk of fire, electric shock or injury:

- Do not use outdoors or on wet surfaces.
- Do not block the motor hood ventilation openings and duct on the top of the power unit. Lack of ventilation airflow will cause the motor to overheat.
- Do not locate the power unit in a high temperature area or where it is inaccessible, for example, an attic or crawl space.
- Mount the built-in vacuum system power unit no less than 12 inches from the ceiling or any adjacent wall and at least 28 inches from the floor. If the unit is not exhausted outside, make sure the adjacent wall is at least 12 inches from the exhaust port. **DO NOT** exhaust into a concealed area.
- Do not leave vacuum cleaner when plugged in. Remove hose from inlet valve and unplug from outlet when not in use and before servicing.
- Do not allow to be used as a toy. Close attention is necessary when used by or near children.
- Use only as described in this manual. Use only manufacturer's recommended attachments.
- \* • Some hoses contain electrical wires. Do not use if damaged, cut or punctured. Avoid picking up sharp objects.
- \* • Always turn off this appliance before connecting or disconnecting either hose or motorized nozzle.
- Do not use with damaged cord or plug. If vacuum cleaner is not working as it should, has been dropped, damaged, left outdoors or dropped into water, return it to a service center.
- Do not pull or carry by cord, use cord as a handle, close a door on cord, or pull cord around sharp edges or corners. Do not run vacuum cleaner over cord. Keep cord away from heated surfaces.
- Connect to a properly grounded outlet only (refer to Grounding Instructions).
- Do not use extension cords or outlets with inadequate current carrying capacity.
- Turn off all controls before unplugging.
- Do not unplug by pulling on cord. To unplug, grasp the plug, not the cord.
- Do not handle plug or vacuum cleaner with wet hands.
- Do not put any object into openings. Do not use with any opening blocked; keep free of dust, lint, hair and anything that may reduce airflow.
- \* • This vacuum cleaner creates suction and contains a revolving brush roll. Keep hair, loose clothing, fingers and all parts of body away from openings and moving parts.
- \* • Do not place cleaner on furniture as brush roll may damage the furniture. Please use cleaner on floor with the handle in storage position while using attachments.
- Do not pick up anything that is burning or smoking, such as cigarettes, matches, or hot ashes.
- Do not use without cartridge filter in place.
- \* • Belt pulleys can become hot during normal use. To prevent burns, avoid touching the belt pulley when servicing the drive belt.
- Use extra care when cleaning on stairs.
- Do not pick up flammable or combustible liquids such as gasoline, or use in areas where they may be present.
- Keep your work area well lighted.
- Unplug electrical appliances before vacuuming them.

*\*Some models*

## INTRODUCTION

Congratulations on your purchase of the Eureka central vacuum system, the ultimate cleaning solution. The Eureka central vacuum system is designed to help you efficiently clean and maintain your home. While vacuuming may never be truly pleasurable, you can have a cleaner, healthier home . . .and more time to do the things you really enjoy.

To achieve the maximum benefits from your Eureka central vacuum system, please read this manual carefully and consult the user guide in the power team tool kit prior to use.

For further information regarding your power unit and other innovative products from Eureka visit [www.eureka.com](http://www.eureka.com).

## SAVE THESE INSTRUCTIONS

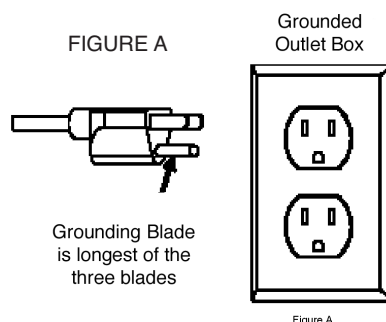
### Grounding Instructions

This appliance must be grounded. If it should malfunction or break down, grounding provides a path of least resistance for electric current to reduce the risk of electric shock. This appliance is equipped with a cord having an equipment-grounding conductor and grounding plug. The plug must be plugged into an appropriate outlet that is properly installed and grounded in accordance with all local codes and ordinances.

### DANGER

Improper connection of an equipment-grounding conductor can result in risk of electric shock. Check with a qualified electrician or service person if you are in doubt as to whether the outlet is properly grounded. Do not modify the plug provided with the appliance. If it will not fit the outlet, have a proper outlet installed by a qualified technician. This appliance is for use on a nominal 120 volt circuit and has a grounding plug that looks like the plug illustrated in Figure A.

**NOTE: In Canada, the use of a temporary adapter is not permitted by the Canadian Electrical Code.**



To reduce the risk of electric shock, the hose with electrical wires has a polarized plug (one blade is wider than the other). This plug will fit in a polarized outlet only one way. If the plug does not fit fully in the outlet, reverse the plug. If it still does not fit, contact a qualified electrician to install the proper outlet. Do not change the plug in any way.

## GENERAL INFORMATION

The built-in vacuum system is designed for dry pick up of household dirt and dust. Avoid picking up hard or sharp objects with the system to prevent hose and plastic pipe damage or clogs.

### Service Information

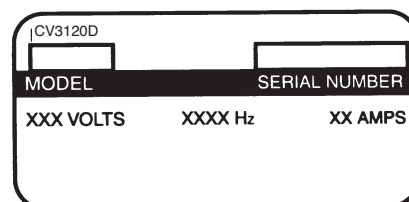
The instructions in this booklet serve as a guide to routine maintenance. For additional information, contact your nearest Authorized Warranty Station.



**DO NOT OIL THE MOTOR AT ANY TIME. IT IS PERMANENTLY LUBRICATED AND SEALED.**

### Rating Plate

The model, type and serial numbers are indicated on the rating plate located on the control panel or motor hood. For prompt and complete service information, always refer to these numbers when inquiring about service.



## PLANNING

If your home already has the system of plastic pipes and inlet valves, you are ready to install the power unit (refer to Install Power Unit section below). If not, you can contract to have the system installed by a professional or you may choose to do-it-yourself. If you plan to install the system yourself, it is important to carefully plan the location of each inlet valve, the power unit, and the network of plastic pipes. This booklet only deals with the installation of the power unit; "How-To" booklets are generally included with installation kits. Careful planning will help you determine the installation kits to buy. The kits should contain enough plastic pipe and fittings, and inlet valves for your needs. Check with your dealer if you have any questions.

### Power Unit Location

**NOTE:** Mount power unit at least 12 inches from the ceiling and any adjacent wall, at least 28 inches from the floor and within 6ft. of an electrical outlet.

**WARNING:** Do not block the hood ventilation openings on the top of the power unit. Lack of ventilation will cause the motor to overheat.

**WARNING:** Do not locate the power unit in a high temperature area where it is inaccessible, for example, an attic or crawl space.

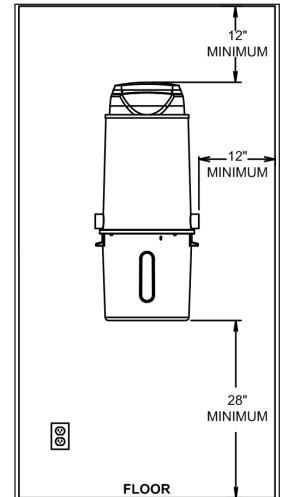
The power unit should be located as far away from the general living area as possible, yet accessible so you can remove the dirt receptacle, reach the filter, and inspect the power unit. A typical location would be in a garage where you could vacuum your car or garage area and where emptying the dirt receptacle and cleaning the filter would be more convenient. Other suitable locations are in the basement, laundry room, or ventilated storage room. It is recommended that the exhaust be vented outside; never into a wall, a ceiling, or a concealed space in the house.

### Wiring for Power Unit

Place the power unit within six feet of a dedicated, grounded electric outlet. The unit requires 120 volt, 60 cycle AC power. Be sure you will not overload the circuit.

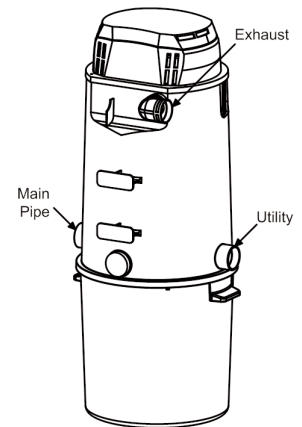
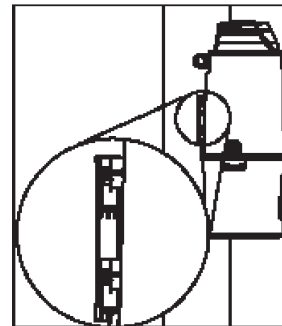
### Install Power Unit

You are now ready to install the power unit. Be sure the power unit will be located at least 12 inches from the ceiling and any adjacent walls and at least 28 inches from the floor. The motor hood ventilation and safety relief valve, if equipped, should never be obstructed. Check to be sure you will be able to occasionally remove the dirt receptacle, reach the filter, and inspect the power unit.



In the chosen mounting location, compare the distance between the wall studs and the power unit mounting bracket. If the mounting bracket cannot mount on one of the wall studs, mount two boards horizontally between the studs and then attach the mounting bracket to these.

Once the bracket is on the wall, you can now hang the power unit. With the unit on the wall, align the power unit intake fitting with the main pipe projecting from the wall and connect these together. **DO NOT GLUE.** At this point, the utility valve can be installed in the other unused intake fitting. Attach the exhaust pipe (or muffler, if equipped) to the motor exhaust fitting.



Locate the two low voltage wires near the main pipe and attach them to the control panel on the power unit using the provided crimp-on terminals. Be certain you comply with your local electrical codes and regulations. Plug the unit into the electrical outlet. You are now ready to check the installation of the unit:

- Plug the hose into each inlet valve to be sure the electrical contacts operate properly.
- Check each inlet valve for air leaks
- Check each pipe connection for air leaks.
- Be sure the dirt receptacle is properly secured to the power unit.
- Be sure the filter is properly installed in the power unit.

Your cleaning system is ready to use.

## HOW TO USE

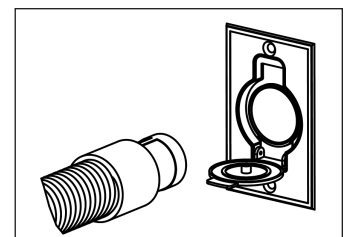
The Eureka Vacuum System is designed to provide the utmost in dust-free, quiet cleaning. The power unit, which is mounted in a remote area of your home, is connected to centrally located inlet valves with a system of lightweight plastic pipes. Using the cleaner is as simple as inserting the vacuum hose into an inlet valve after attaching the appropriate tool.

### Overload-Protection Reset Button

The Eureka vacuum system features an overload protection device, which can be reset should the motor be overloaded causing the circuit to open. Should this happen and the power unit fails to operate, either:

- 1) Unplug the power unit from the electrical outlet for 30 seconds and then plug the unit back in, or
- 2) Depress the reset button located on the side of the power unit. (LCD Models Only)

If the protector continues to trip, contact the authorized service center nearest you.



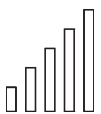
## Inlet Valves

Each inlet valve has electrical contacts which activate the power unit motor when the hose is connected and in use. The system shuts off as soon as the hose is removed or turned off.

An obstruction in the inlet valve may cause the power unit to continue to run after the hose is removed from the inlet. Check all the inlet valves and remove any obstruction to shut down the power unit.

When unplugging the hose from the inlet valve, hold the inlet cover open for a few seconds to allow the suction to decrease and protect the inner seal.

## Message Center Liquid Crystal Display (Some Models)



**Performance Indicators** - Power unit motor is operating at peak or optimum performance when all five power bars are illuminated. Normal operating performance is when three to five bars are shown. Fewer bars will be illuminated as performance decreases. Display will illuminate operating performance of the last operating cycle during sleep mode. Note: It is normal to see changes in performance when specialty cleaning tools are used. Performance levels will decrease as the filter is loaded with debris or as the motor has significant wear.



**Clean Filter Indicator** - The cloth filter installed in the power unit may require occasional cleaning based on the amount of usage and type of debris vacuumed. The Clean Filter Indicator will light when the power unit senses a loss in power that will affect cleaning performance. When Clean Filter Indicator is lit, remove and clean filter as shown in "How to Maintain" section of Owners Manual.



**Call for Service Indicator** - The Call For Service Indicator will light when the power unit reaches a period in the life cycle when motor brushes and filter should be checked for wear. Contact your nearest service station/dealer for proper service to avoid major maintenance costs.



**Hours of Service Indicator** - The Hours of Service Indicator shows hours of machine usage. When the last bar is flashing service is urgently required.

## HOW TO MAINTAIN

The instructions given in the booklet serve as a guide to routine maintenance. Proper airflow or suction can be maintained by keeping the dirt receptacle and filter clean and the plastic pipe and hose free from clogs. Check the Home Maintenance Guide at the end of this booklet for suggestions before calling for service.

### Dirt Receptacle and Filter

Reduced airflow or suction indicates the built-in vacuum system is not operating at maximum efficiency: If the dirt receptacle is full and the filter is clogged, no air can pass through the unit and no cleaning can take place.

### Empty The Dirt Receptacle

**NOTE: Disconnect power cord from electrical outlet before removing the dirt receptacle.**

Some models feature see-through windows on the receptacle to tell at a glance when the receptacle needs to be emptied; on other models the receptacle must be removed. To remove the receptacle, grasp the handles and turn the receptacle to the left. Remove and empty the contents. Return the receptacle and turn to the right. Be sure the receptacle is securely attached to avoid any suction leakage.

### Filter and Disposable Bag

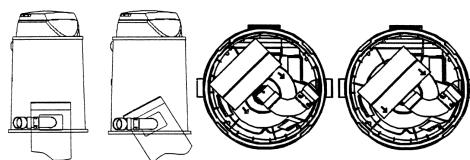
If the disposable paper bag is full or a filter is clogged, no air can pass through the unit and no cleaning will take place. Remove and dispose of the paper bags.

### SOME MODELS FEATURE A DISPOSABLE PAPER FILTER BAG WITH CLOTH FILTER

**NOTE: Disconnect power cord from electrical outlet before cleaning the filter.**

The elbow with the paper bag adapter must be installed, locked in its L slots, in the body facing downward as shown for the paper bag.

1. Hold the bag collar with fingertips and align the bumps in the adapter with the bump cutouts in the collar.
2. Insert adapter and push the bag collar all the way up to the lip on the elbow.
3. Rotate the bag collar 45° counter clockwise so the bumps on the adapter DO NOT align with the collar bump cutouts. Replace the bucket, turn to lock.
4. To remove, rotate the bag collar 45° clockwise and gently lower the collar off of the bag adapter.



## Cloth Filter

If the disposable paper bag is full or a filter is clogged, no air can pass through the unit and no cleaning will take place. Remove and dispose of the paper bags.

**NOTE: Disconnect power cord from electrical outlet before cleaning the filter.**

**NOTE: The cloth filter must remain in place even if the paper filter is used.**

The elbow with the paper bag adapter must be installed, locked in its L slots, in the body facing downward as shown for the paper bag.

1. Remove the lower dirt receptacle.
2. Wrap a large garbage bag around the lower portion of the power unit and hold firmly in position.
3. Grasp the cloth filter through the plastic bag and shake. Dirt will drop into bag.
4. Carefully remove the plastic bag from the unit and discard.
5. Replace the dirt receptacle on unit.

## Replacement of the Cloth Filter Bag

**NOTE: Removal of cloth filter is not advised and is not normally necessary.**

The band in the rim of cloth filter must be secured into corresponding groove in Intermediate Body to ensure an airtight seal.

If for any reason, the cloth filter has been dislodged during shipment it must be reinstalled prior to use.

Fold back filter band, align it with groove in body and uncoil. Final portion of band should require a slight push to POP it into place. If not, remove and repeat installation procedure.



## HOME MAINTENANCE GUIDE

If you experience trouble with your built-in vacuum system, follow the suggestions below before calling for service.

### LOSS OF SUCTION POWER:

- Be sure lid is on properly.
- Empty dirt receptacle.
- Clean filter.
- Be sure each inlet valve is properly closed.
- Check for hose obstruction.

Plug hose coupling into any inlet valve. Then, as you check each of the other inlet valves, raise the inlet cover and hold your hand over the opening to check for suction. If there is normal suction at each inlet, then insert the hose into one of the other inlets. If there is no suction through the hose at the second inlet, the blockage is in the hose. To clear the hose obstruction, insert a blunt instrument into the hose (garden hose, wood dowel). If there is one inlet valve without normal suction and you have checked for hose blockage, then the blockage is in the pipe system between the blocked inlet valve and the power unit (see instructions below).

- Clear blockage in pipes  
Insert the hose into the inlet valve where there is no suction; hold your hand over the hose end. Release hand quickly. Repeat several times. If blockage does not clear, contact your nearest service station/dealer.

### POWER UNIT WILL NOT START:

- Reset the overload protection device by following the directions on the Overload Protection Reset section of the manual.  
NOTE: The safety device breaks the circuit of the motor is overloaded.
- Check for blown fuse in main house supply box.
- Unplug the power unit from the electrical outlet and check all wall inlet and motor wiring connections for loose wires.

### POWER UNIT WILL NOT STOP RUNNING:

- Check inside each inlet valve for obstruction of low voltage contacts. If no visual obstruction can be detected, disconnect the vacuum from the electrical outlet and contact your nearest service station/dealer.





## U.S. WARRANTY POLICY

### The Eureka Vacuum Systems Limited Warranty

#### What This Warranty Covers

Your Eureka Vacuum System Power Unit is warranted to be free from all defects in material and workmanship in normal household use for a period of five years from the date of purchase for all parts and one year for labor. Your Vacuum System Accessories are warranted for a period of one year. The warranty is granted only to the original purchaser and members of his or her immediate household. The warranty is subject to the following provisions.

#### What This Warranty Does Not Cover

- Damages or malfunctions caused by negligence, abuse, acts of God, failure to provide proper maintenance, or use not in accordance with the Owner's Guide.
- Defects or damages caused by unauthorized service or the use of other than Genuine Eureka parts.
- Installation materials or damage caused by faulty or improper installation, modification, or alteration of the Power Unit.
- Parts of the Accessories that require replacement under normal use, such as drive belts, light bulbs, and brush roll bristles.

#### What The Eureka Company Will Do

The Eureka Company will, at its option, repair or replace a defective power unit, accessory, or part that is covered by this warranty. As a matter of warranty policy, the Eureka Company will not refund the consumer's purchase price.

#### Product Registration

Keep all payment records and proof of purchase. The date on these records established the warranty period. If proof of purchase cannot be supplied, the warranty period will be determined from the date of manufacture of the product. To place on file proof of the required information, fill out and return the registration card accompanying your cleaner or register on line at [www.eureka.com](http://www.eureka.com).

#### Obtaining Warranty Service

To obtain warranty service you must return the defective cleaner or cleaner part along with proof of purchase to any Eureka Authorized Station. You will find the nearest location in the Yellow Pages, under "Vacuum Cleaners". Be certain that the Warranty Station is "Eureka Authorized Service and Repair." For the location of the nearest Eureka Authorized Warranty Station or for service information, telephone toll free: USA: 1-800-282-2886

#### Further Limitations and Exclusions

This is the sole and exclusive warranty of The Eureka Company. Any warranty that may be implied in connection with your purchase or use of the cleaner, including any warranty of Merchantability or any warranty for Fitness For A Particular Purpose is limited to the duration of this warranty. Some states do not allow exclusions of warranties or limitation of damages, so the above limitations may not apply to you. Your relief for the breach of this warranty is limited to the relief expressly provided above. In no event shall Eureka be liable for any consequential or incidental damages you may incur in connection with your purchase or use of the cleaner. Some states do not allow the exclusion or limitation of incidental or consequential damages, so the above limitation or exclusion may not apply to you. This warranty gives you specific legal rights. You may also have other rights, which vary, by state.

#### Questions & Answers about Genuine Eureka Products

Q: Why should I use only Genuine Eureka paper bags, belts, and parts in my Eureka vacuum cleaner?

A: Using Genuine Eureka Products, which are made to our exacting specifications and engineered with emphasis on quality, performance, and customer satisfaction, ensures the long life and cleaning efficiency of your vacuum cleaner. Overall, this saves you money and helps to keep your home clean.

Q: How can I be sure I am using only genuine Eureka products in my vacuum cleaner?

A: Typically, packaged products and paper bags can be identified by a "Genuine Eureka Product" symbol (see illustration above). For further identification assistance, you may call our toll-free number, 1-800-282-2886, for the location of a nearby Eureka Authorized Warranty Station.

Q: Are there any difference between "made to fit" or "imitation" and Genuine Eureka paper bags, belts, and parts?

A: Yes, there are some very important difference in materials, quality, and reliability. Many customers have mistakenly purchased "imitation" paper bags and parts while thinking they purchased genuine. Unfortunately, many of these customers discovered the differences after they experienced related difficulties.

For Genuine Eureka Value, Accept No Imitations!  
THE EUREKA COMPANY • Bloomington, IL 61701 • [www.eureka.com](http://www.eureka.com)



## **EUREKA CANADA** **Lifetime Limited Warranty**

The materials and workmanship in your new central vacuum are guaranteed against material defects for as long as you own the system. The foregoing warranty applies only to the power unit body, the filters, the inlet valves and the Eureka ducting system, which is also guaranteed against clogs.

### **90 Day Money-Back Guarantee**

Your Eureka central vacuum is guaranteed to bring you total satisfaction. If, for any reason, it does not perform as advertised within 90 days from the date of purchase, you can return it to your dealer for exchange, refund, or model upgrade credit on the full product price.

### **Three Year Guarantee On Accessories**

If any Eureka central vacuum accessory (power head, current-carrying hose and cleaning tools) fail to perform as advertised due to faulty workmanship or material for a period of three years from date of purchase, simply return it to your Eureka warranty centre. The item will be repaired or replaced free of charge. The foregoing warranty does not apply to naturally wearable items such as bags, belts, or bulbs. Repair labour on parts replacements is covered for a period of one year.

### **7 YEAR MOTOR AND ELECTRICAL GUARANTEE**

The electrical components and the motor of your Eureka central vacuum, including the carbon brushes will be free from material defects in materials and workmanship for a period of seven years from the date of purchase.

N.B. These warranties apply only under normal conditions of residential use of your Eureka Vacuum In Canada. Except for the 90 day money-back guarantee, the sole and exclusive remedy for any of the foregoing warranties shall be the repair or replacement of the product, at our option, provided that the product is retained during the warranty period. This warranty does not meet (a) damage born any cause other than manufacturer's defect including, without limitation, misuse, abuse or unreasonable use of the product, neglect or accident relating the the use of the product. This warranty is in lieu of all other warranties and conditions of any kind whether expressed, implied or statutory including, without imitation implied warranties and conditions of merchantability and fitness for a particular purpose. A bill of sale, or copy, will be required when making warranty claims. Modifications to the product may void the warranty. Eureka is not responsible for any consequential incidental damages arising from use of the system.



