

Sanitaire

by

 **Electrolux**

32 Inch Push Sweeper SC435A Owner's Guide



IMPORTANT

Do not return this product to the store. Call 1-800-800-8975* Monday - Friday, 8 am to 7:30 pm CST and 10 am to 6:30 pm Saturday or visit our web site, www.sanitairevac.com for any of the following:

- assembly problems
- replacement of broken or missing items
- to review repair parts list
- to order replacement parts and accessories
- to locate the nearest Sanitaire Warranty Station

*En Mexico llame al 5670-6169.

PLEASE RETAIN

We suggest you record the model, type and serial numbers below. They are located on the silver rating plate on your cleaner. For prompt and complete service information, always refer to these numbers when inquiring about service.

Model & Type _____

Serial No. _____

It is also important to keep your receipt as proof of date of purchase.

www.sanitairevac.com

TABLE OF CONTENTS

1.	General Information	3
1.1.	Important safety advice.....	3
1.2.	Guidelines for the operator	3
1.3.	Transporting the machine.....	3
2.	Preparing the Machine.....	4
3.	Operation.....	4
3.1.	Using the machine.....	4
4.	When Cleaning is Finished	4
4.1.	Emptying the machine.....	4
4.2.	Storage.....	4
4.3.	Maintenance.....	4
4.4.	Main brush replacement.....	5
4.5.	Side brush replacement.....	5
5.	After Sales Service.....	5
6.	Warranty.....	6
7.	Technical Specification.....	6
8.	Troubleshooting.....	6
9.	Replacement Parts.....	7

Thank you for purchasing this Sanitaire sweeper. Feel confident that with Sanitaire you are obtaining a high quality product engineered for optimal performance. This sweeper is capable of picking up dry materials.

FOR YOUR SAFETY CAREFULLY READ AND UNDERSTAND ALL INSTRUCTIONS.

WARRANTY

Your new Sanitaire sweeper is a high quality, precision-made product. All parts used in the manufacturing of this sweeper have passed rigid quality control standards prior to assembly. The sweeper is warranted for 1 year from the date of purchase as shown on your receipt/invoice. Failures due to misuse, neglect, abuse or normal wear and tear are not covered by this warranty. Sanitaire shall not be responsible for any incidental or consequential damages. Please safeguard the original receipt/invoice. If you experience any problems with your sweeper during the warranty period, the original receipt/invoice will act as proof of purchase. Contact Sanitaire for any warranty inquires. Do not return a failed unit to the place of purchase or service center. Any charges for the shipping of a Sanitaire unit under warranty are purchaser's responsibility unless Sanitaire request such return in writing. This warranty gives you specific legal rights, and you may also have other rights, which vary from state to state. There are no warranties, express or implied, written or verbal, which extend beyond the description found in the manual.

1. General information

The Sanitaire 32" sweeper is designed exclusively for operation on solid, level and dry surfaces. It has been designed for the professional user to ensure long service life and safe operation.

These instructions only cover the operation of the machine and do not include information on the basics of sweeping. Any user not familiar with basic sweeping methods should contact their supervisor or Sanitaire before proceeding.

This machine must only be used for the manufacturer's approved application. This sweeper is intended exclusively for operation on solid, level and dry surfaces. Do not use on a surface with a slope exceeding 2%. Do not use the machine where it is suspected that the surface contains health endangering dust or debris such as asbestos or chemical waste. If this is suspected do not proceed, contact your supervisor or Sanitaire for advice.

The following instructions contain important information about the machine and safety advice for the operator.

Equipment must be operated, serviced and maintained in accordance with the manufacturer's instructions. If in doubt contact the supplier of your machine.

1.1 Important Safety Advice

When using the Sanitaire 32" sweeper, basic safety precautions should be followed including the following.

- Read all instructions carefully before use.
- Use only as described in this manual.
- Keep children and unauthorized persons away from the machine when in use.
- Do not use where hazardous dust is present.
- Do not use in an explosive atmosphere.
- Do not pick up oil or other flammable material with the machine.
- Do not use on a surface with an inclination exceeding 2%.
- Take care when using a machine near the top of stairs to avoid overbalancing.
- CAUTION: This sweeper must not be used for collecting hazardous materials.
- Use only on surfaces indicated in the operating instructions.
- CAUTION: Only replace damaged or worn parts with genuine original equipment parts in order to maintain safety and to protect your warranty.
- CAUTION: Never sweep over surfaces that are wet.
- CAUTION: Do not store outdoors. Store in a clean and dry location.
- CAUTION: Do not reach into or under the machine under any circumstances when running.
- CAUTION: Use only accessories and spare parts that have been approved by the manufacturer.
- CAUTION: Do not use a pressure washer to clean the unit.

- CAUTION: Repairs may only be carried out by authorized customer service centres.

1.2 Guidelines for the operator

- Operators must be fully trained in the use of the machine in accordance with these instructions, able to perform user maintenance and the correct selection of accessories.
- Operators should be physically capable to maneuver, transport and operate the machine.
- Operators should be able to recognise unusual operation of the machine and report any problems.
- Wear suitable footwear to avoid slipping.
- Wear suitable clothing to keep dry and warm.
- Where possible implement job rotation and adequate rest periods to avoid continuous use of the same muscles.
- Do not smoke when using the machine.
- CAUTION: Keep hair, loose clothing, fingers, and all parts of body away from openings and moving parts.

1.3 Transporting the machine

When transporting the machine ensure that all components and removable parts are securely fastened.

Do not lift or transport the machine while the dirt collector is full, as this will add considerably to the weight.

Take extreme care when moving the machine up or down steps or stairs.

CAUTION – Incorrect lifting techniques may result in personal injury. We advise that the manual handling regulations are followed.

2 Preparing the Machine

- Remove the machine from the box.
- Check that all the parts are in good condition.
- Assemble the handle in the upright position by attaching it to the brackets above the rear wheels. Tighten with the two thumbscrews. (Fig. 1)

Fig 1



- To install the side brushes, apply light pressure, twisting the brushes upwards on the snap device until you feel them lock into place. (Fig 2)

Fig 2



- Height adjustment of the main brush is achieved by rotating the knob located on each side of the machine (Fig. 3)

Fig 3



- To adjust the side brushes, turn the adjustment knob above the brush to raise or lower the brushes. (Fig. 4)

Fig 4



3 Operation

3.1 Using the machine

- To use the Sanitaire 32" sweeper, simply push it at a normal walking speed.

- When the machine is pulled backwards, the side brushes and main brush automatically lift slightly from the floor. This prevents the creation of unnecessary dust. The brushes are all automatically lowered to the pre-selected working position when the sweeper is moved in a forward motion.

4 When Cleaning is Finished

4.1 Emptying the machine

- To empty the dirt collector, simply lift out and empty into a suitable waste disposal bin.

4.2 Storage

- Adjust the side brushes upwards after use to protect the bristles during storage. (Fig. 4)
- To store the Sanitaire 32" sweeper in the upright position, loosen the thumbscrews slightly and fold handle bar down. The handle can now be folded down either to the front or to the rear. Park in an upright position with the wheels towards the wall. (Fig. 6)

Fig 6



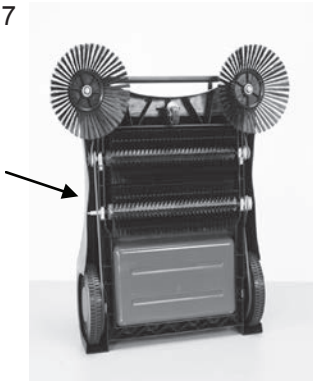
4.3 Maintenance

- The Sanitaire 32" sweeper is designed to be maintenance free. All bearings are dust proof and all parts are weatherproof. To clean the machine wipe off with a dry or damp cloth. It is not recommended to clean the machine with a pressure washer.

4.4 Main Brush Replacement

- The brushes are designed so that only one of the two brush rollers is in contact with the surface area and thus exposed to wear and tear. The front roller brush within the machine can be used as a replacement brush for the rear roller.
- To replace the brush, turn the machine upside down and support.
- Unscrew the two height-adjustment knobs and remove them. (Fig. 7)

Fig 7



- Withdraw the two bearings, brush roller and driving pieces at the side and place them on the new roller, making sure to use the right driving piece for the right side of the roller and the left on the left. The two driving pieces are not interchangeable.
- Replace the brush and adjust to the required working height on both sides.

4.5 Side Brush Replacement

- To replace the brush, turn the machine upside down and support.
- Use two fingers to press the brush retaining clips in the centre of the brush. The center axle does not need to be unscrewed – no tools are required to replace the side brushes.
- Pull off the brush and press a new brush into the retainer (Fig. 8)

Fig 8



5 After Sales Service

Should you require after sales service please contact the supplier from whom you purchased the machine, who will arrange service. Repairs and servicing of Sanitaire products should only be performed by trained staff. Improper repairs can cause considerable dangers to the user.

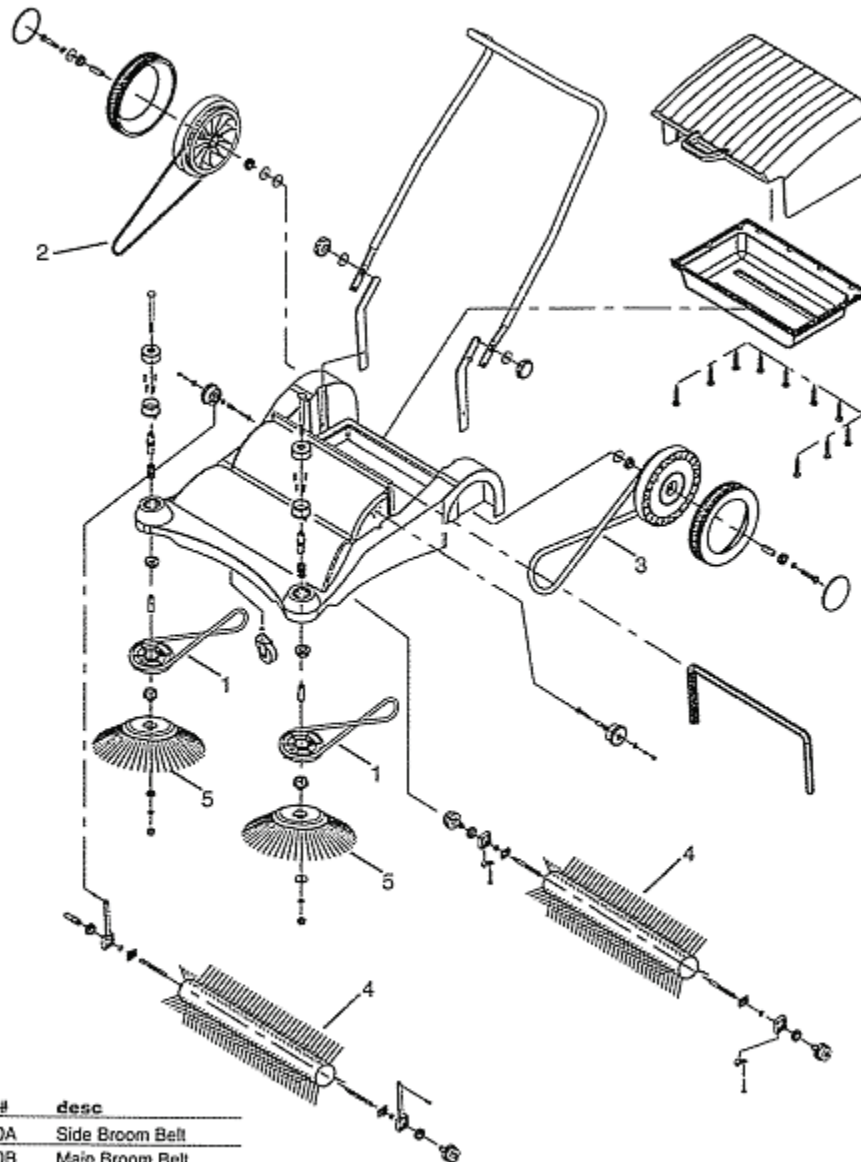
6 Technical Specification

Model		SC435A
Cleaning path	in	32
Dirt collector capacity	gal	10
Size (L x W x H)	in	31 x 24 x 14
Weight empty	lbs	30
Operation		manual
Brush system		Quad system
Warranty		1 year

7 Troubleshooting

Problem	Reason	Solution
Cylindrical brush not rotating Side Brushes not rotating	Brush obstruction Damaged belt	Remove obstruction. Check and replace belt as required
Excessive vibration	Screws and fittings are loose	Check and re-tighten as required
Main brush height cannot be adjusted	Obstruction in mechanism	Check height adjustment mechanism and remove obstruction

8 Replacement Parts



ref#	part #	desc
1	PS320A	Side Broom Belt
2	PS320B	Main Broom Belt
3	PS320C	Drive Belt
4	PS320D	Main Broom
5	PS320E	Side Broom