

Sanitaire

by

 **Electrolux**

HYBRID DRYER SC6055 Owner's Guide



IMPORTANT

Do not return this product to the store. Call 1-800-800-8975* Monday - Friday, 8 am to 7:30 pm CST and 10 am to 6:30 pm Saturday or visit our web site, www.sanitalrevac.com for any of the following:

- assembly problems
- replacement of broken or missing items
- to review repair parts list
- to order replacement parts and accessories
- to locate the nearest Sanitaire Warranty Station

*En Mexico llame al 5670-6169.

PLEASE RETAIN

We suggest you record the model, type and serial numbers below. They are located on the silver rating plate on your cleaner. For prompt and complete service information, always refer to these numbers when inquiring about service.

Model & Type _____

Serial No. _____

It is also important to keep your receipt as proof of date of purchase.

www.sanitalrevac.com

WARRANTY

Your new Sanitaire unit is a high quality, precision-made product. All parts used in the manufacturing of this unit have passed rigid quality control standards prior to assembly. The motor is warranted for 1 year from the date of purchase as shown on your receipt / invoice. All other parts are warranted for 90 days from the date of purchase. Failures due to misuse, neglect, abuse or normal wear and tear are not covered by this warranty. Sanitaire shall not be responsible for any incidental or consequential damages. Please safeguard the original receipt / invoice. If you experience any problems with your unit during the warranty period, the original receipt / invoice will act as proof of purchase. Contact Sanitaire for any warranty inquiries. Do not return a failed unit to the place of purchase or service center. Any charges for the shipping of a Sanitaire unit under warranty are purchaser's responsibility unless Sanitaire requests such return in writing. This warranty gives you specific legal rights, and you may also have other rights, which vary from state to state. There are no warranties, express or implied, written or verbal, which extend beyond the description found in this manual.

SAFETY INSTRUCTIONS & WARNINGS

IMPORTANT SAFETY INSTRUCTIONS

READ AND UNDERSTAND ALL INSTRUCTIONS BEFORE USING THIS UNIT

Read and understand this owner's manual and all labels on the unit before operating. Safety is a combination of common sense, staying alert and knowing how your unit works. Use this unit only as described in this manual. To reduce the risk of personal injury or damage to your unit use only Sanitaire recommended accessories

For Commercial use,

SAVE THIS MANUAL FOR FUTURE REFERENCE

When using an electrical appliance, basic precautions should always be followed including the following:

WARNING: TO REDUCE THE RISK OF FIRE, ELECTRICAL SHOCK OR INJURY:

- Do not run the unit unattended
- Do not use this unit near flammable liquids, gases, or explosive vapors like gasoline or other fuels, lighter fluids, cleaners, oil-based paints, natural gas, hydrogen, or explosive dusts like coal dust, magnesium dust, grain dust, or gun powder. Sparks inside the motor can ignite flammable vapors or dust.
- Keep the cord away from heated surfaces.
- Do not expose to rain. Store indoors.
- Do not unplug by pulling on cord. To unplug, grasp the plug
- Do not use with damaged cord, plug, or other parts.
- If the unit is not working as it should, has been dropped, damaged, left outdoors, or dropped into water, return it to a service center.
- Do not pull or carry by the cord, use the cord as a handle, close a door on a cord, or pull cord around sharp edges or corners.
- Do not run the unit over the cord.
- Do not handle the plug or the unit with wet hands.
- To reduce the risk of health hazards from vapors or dusts, do not vacuum toxic materials.
- Do not store near hazardous materials.

- Do not use the unit with a torn filter or without the filter installed except when vacuuming liquids as described in the operations section of this manual.
- Do not allow it be used as a toy. Close attention is necessary when used by or near children.
- To reduce the risk of injury from accidental starting, unplug power cord before changing or cleaning filter.
- Do not leave the unit unattended when plugged in. Unplug from wall outlet when not in use and before servicing.
- Turn off the unit before unplugging.
- Do not put any object into ventilation openings. Do not operate with any ventilation openings blocked; keep free of dust, lint, hair or anything that may reduce air flow.
- Keep hair, loose clothing, fingers and all parts of the body way from openings and moving parts.
- To reduce the risk of falls, use extra care when using the unit on stairs

Grounding Instructions

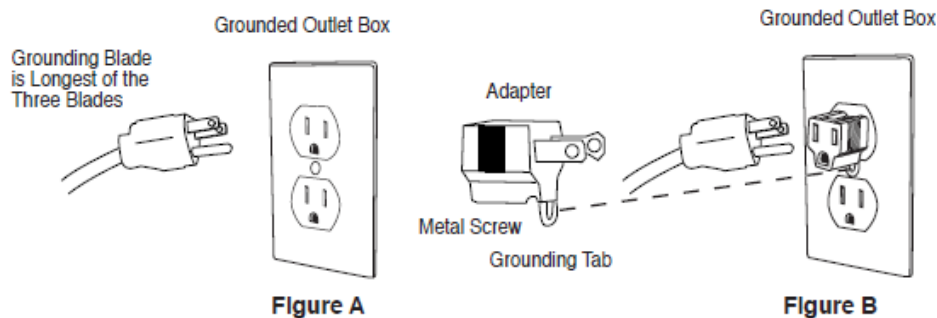
This appliance must be grounded. If it should malfunction or breakdown, grounding provides a path of least resistance for electric current to reduce the risk of electric shock. This appliance is equipped with a cord having an equipment-grounding conductor and grounding plug. The plug must be plugged into an appropriate outlet that is properly installed and grounded in accordance with all local codes and ordinances.

DANGER

Improper connection of an equipment-grounding conductor can result in risk of electric shock. Check with a qualified electrician or service person if you are in doubt as to whether the outlet is properly grounded. Do not modify the plug provided with the appliance. If it will not fit the outlet, have proper outlet installed by a qualified technician.

This appliance is for use on a nominal 120 volt circuit and has a grounding plug that looks like the plug illustrated in Figure A. A temporary adapter which looks like the adapter illustrated in Figure B may be used to connect this plug to a two-pole receptacle, as shown, if a properly grounded outlet is not available. The temporary adapter should be used only until a properly grounded outlet, Figure A, can be installed by a qualified electrician. The green colored rigid ear, lug, or the like extending from the adapter must be connected to a permanent ground such as a properly grounded outlet box cover. Whenever the adapter is used, it must be held in place by a metal screw.

 **NOTE:** In Canada, the use of a temporary adapter is not permitted by the Canadian Electrical Code.



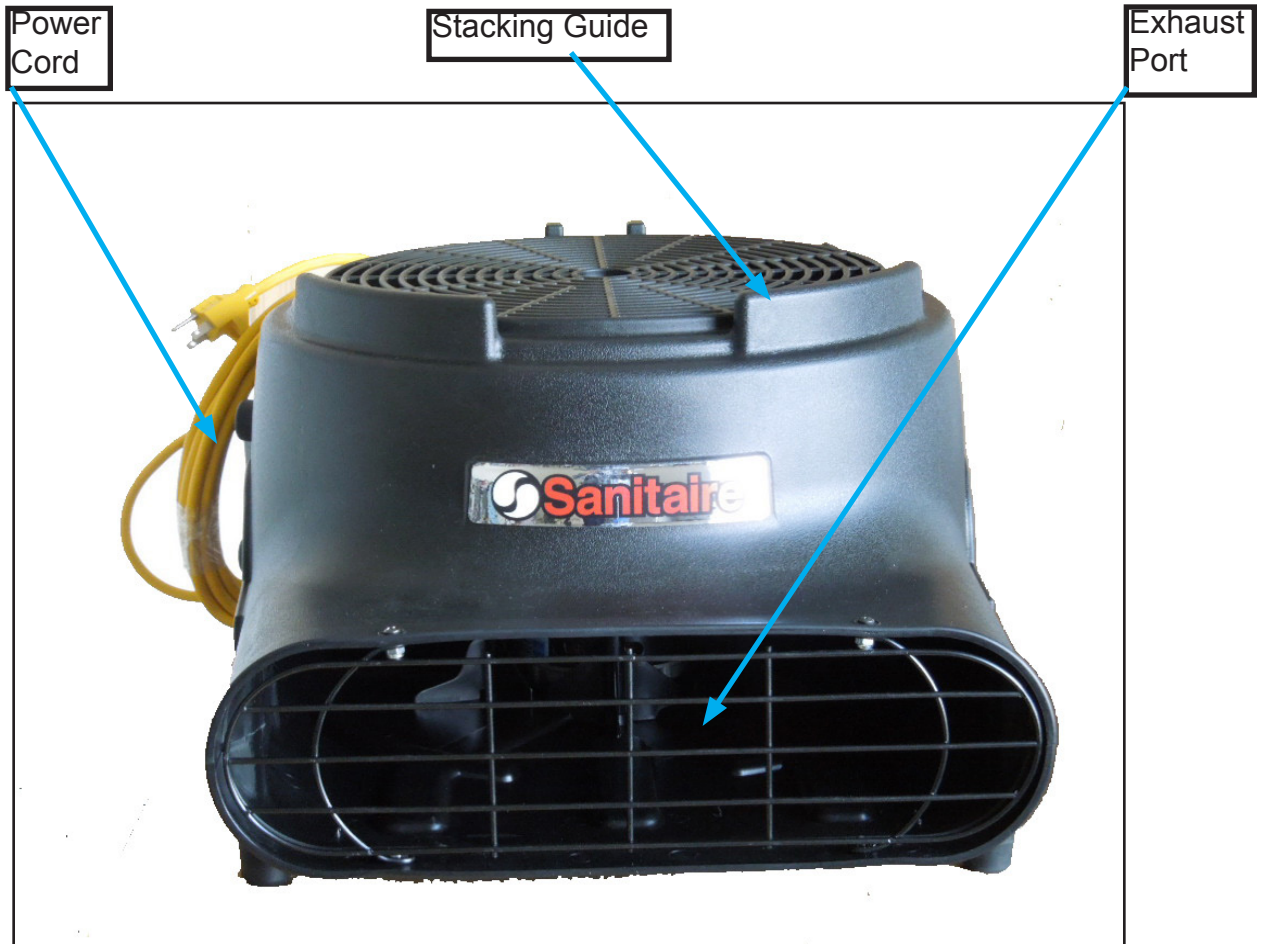
When the Machine is Delivered

1. Check the carton for signs of shipping damage.
2. Remove the machine from the carton and look for damage.

If the machine is damaged, notify the carrier immediately and request an inspection. Be sure to keep the carton, packing inserts, packing lists, and carrier's receipt until the inspector has verified your claim.

Before Operating Machine

Read this manual completely before attempting to operate machine. This manual has important information for the use and safe operation of the machine. Keep this manual on file and handy. The machine will provide years of satisfactory service if operated and maintained according to recommendations in the manual.



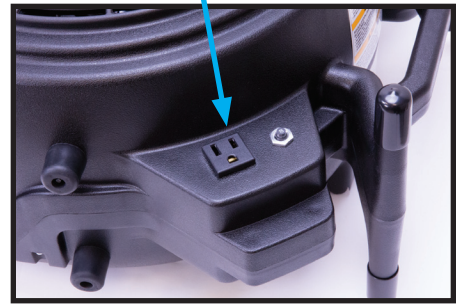
Speed Selector Switch



Cord Wrap Side Stand



Daisy chain outlet



The Speed selector switch provides the following settings, III = High Speed, Figure 1; II = Medium Speed, Figure 2; I = Lo, Figure 3; and 0 = Off, Figure 4.



Figure 1 for High Speed

Figure 2 for Medium Speed

Figure 3 for Lo Speed

Figure 4 to turn OFF

WARNING: if too much air is exhausted from a space with Open Combustion Devices (e.g. furnaces, fireplaces or water heaters) can cause those devices to back draft. This can contaminate the space with potential fatal gases.

This unit should only be used as a recirculating fan. **WARNING:** When exhausting air from a space, always check Combustion Devices with the fan running to guarantee the back drafting prevention measures are working.

The standard orientations are, horizontal, figure 5, vertical, figure 6, and sideways figure 7. Care must be taken, especially in the sideways orientation, not to block the air intake.



Figure 5 Horizontal



Figure 6 Vertical



Figure 7 Sideways

The units can be stacked during storage or transport to minimize the required space. Stacking Guides are located on the top and bottom of each unit. **NOTE:** Do not stack more than 6 units high.

To ensure objects are not sucked against the intake guard during operation, do not place items in front of the intake guard.

Cord Storage

Your unit is equipped with a cord wrap and storage area on the back of the unit. To properly store the power cord:

- Turn off the unit
- Disconnect any units plugged into the unit
- Unplug the unit from the wall outlet
- Snugly wrap the power cord around the cord wrap/feet
- Secure the end of the power cord to itself using the latch on the plug of the power cord.



Figure 8



Figure 9

Warning: When daisy chaining units, each unit is controlled separately. The daisy chained units are not controlled by the master unit that is plugged into the wall outlet. Even with the master unit switch in the OFF position any daisy chained unit(s) will still have power and may be turned ON. The circuit breaker controls both the fan and the outlet. If the circuit breaker trips while units are daisy chained, remove some of the down stream units before resetting the breaker. Maximum of 4 units may be daisy chained off of 1 unit for a total of 5 units per circuit.



WARNING: Always unplug machine before cleaning, or making adjustments or repairs.

Note: Always store the Hybrid Dryer in a dry place.

After Every Use:

- **Remove any lint or debris from the intake screen.**
- **Clean cord with a window cleaner (or similar) and wrap.**

Monthly:

- **Inspect all electrical connections and cord.**
- **If you see any noticeable build-up of debris in the motor and/or fan, remove the intake screen and fan. Vacuum clean and replace.**

Catalog Number	SC6055
Dimensions	22" x 16.5" x 11.5" 56 cm x 42 cm x 29 cm
Net Weight	18 lbs. / 8.2 kg
Running Amps	2.8 max
Power	120V
Air Velocity	3,400 FPM
Kickstand	Yes
Daisy Chain Capable	Yes
Stackable	Yes
Power Cord	20 ft. / 6m
Certification	